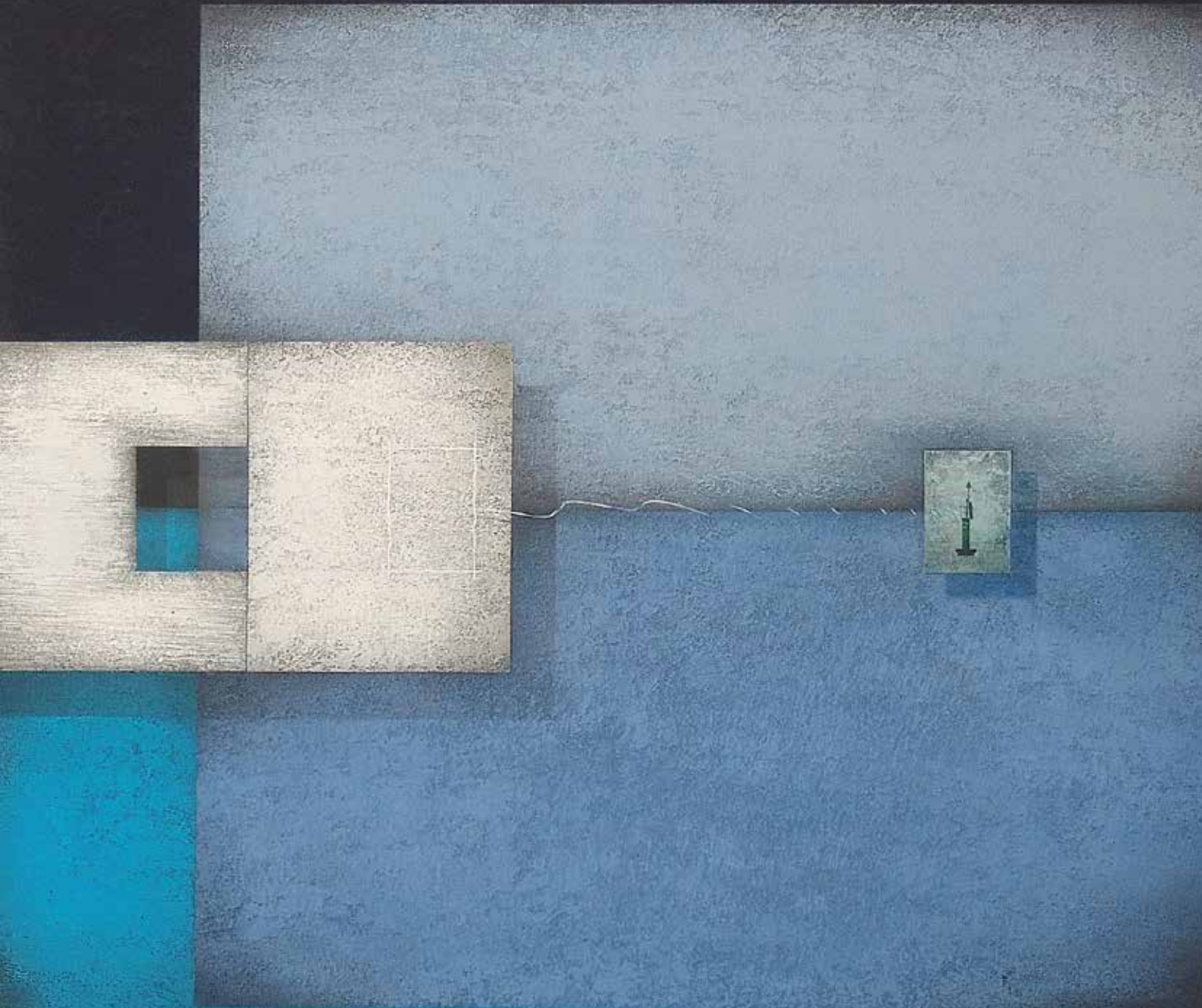


echeberria  
galería de arte



FRANK JENSEN

74



*"Metrópolis". Mixta/Madera y Acero 41 x 130 cm.*



*"Reach out". Mixta/Tela 100 x 100 cm.*



echeberria

galería de arte

1975 - 2015

EXPOSICIÓN  
FRANK JENSEN

22 de junio - 23 de julio  
2016

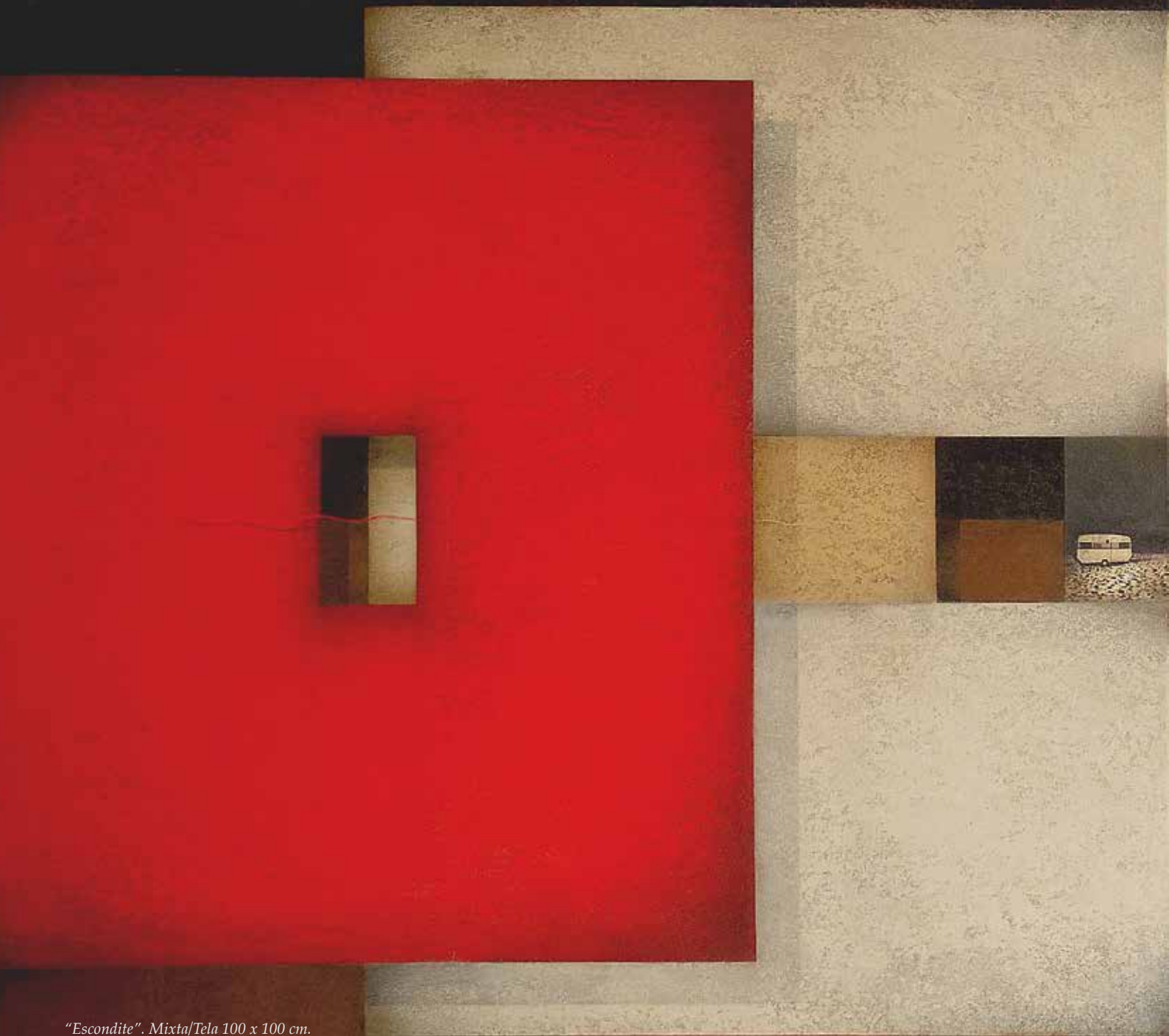
zubieta, 20 / P.º de la concha • 20007 san sebastián • tel. 943 42 89 23 • [www.galeriaecheberria.com](http://www.galeriaecheberria.com)

horario: de 11 a 13 h. de 17 a 20:00 h. lunes mañana y festivos cerrado

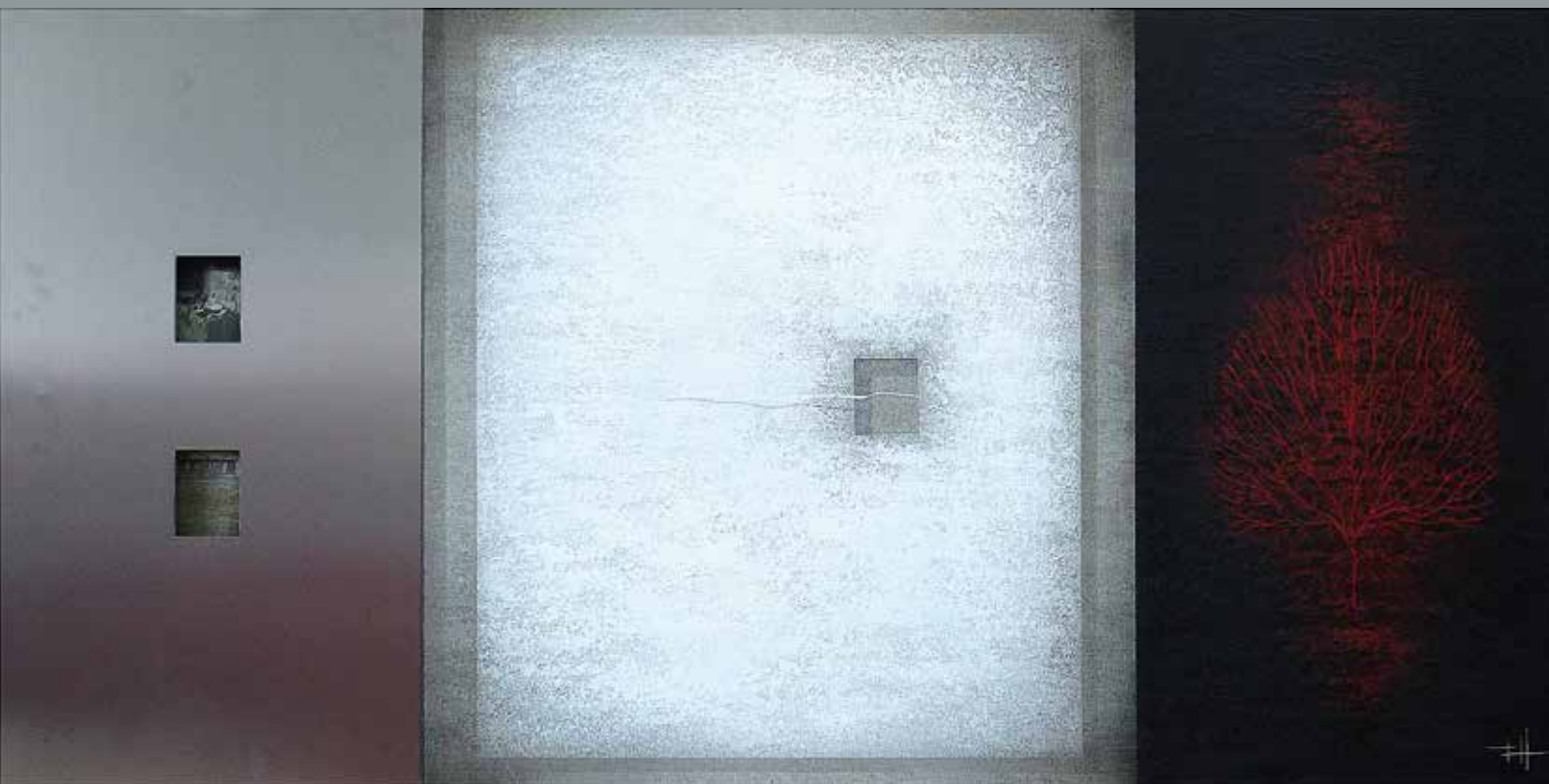
Avisos: 652 70 42 46

**servicio de valoraciones**





*"Escondite". Mixta/Tela 100 x 100 cm.*



*"Huida". Mixta/Tela 73 x 146 cm.*



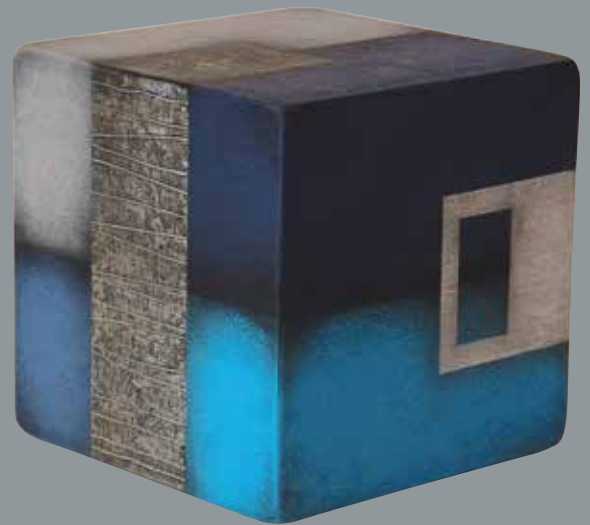
*"Thuro". Mixta/Tela 80 x 160 cm.*



*"Recuerdos musicales". Mixta/Tela 100 x 100 cm.*

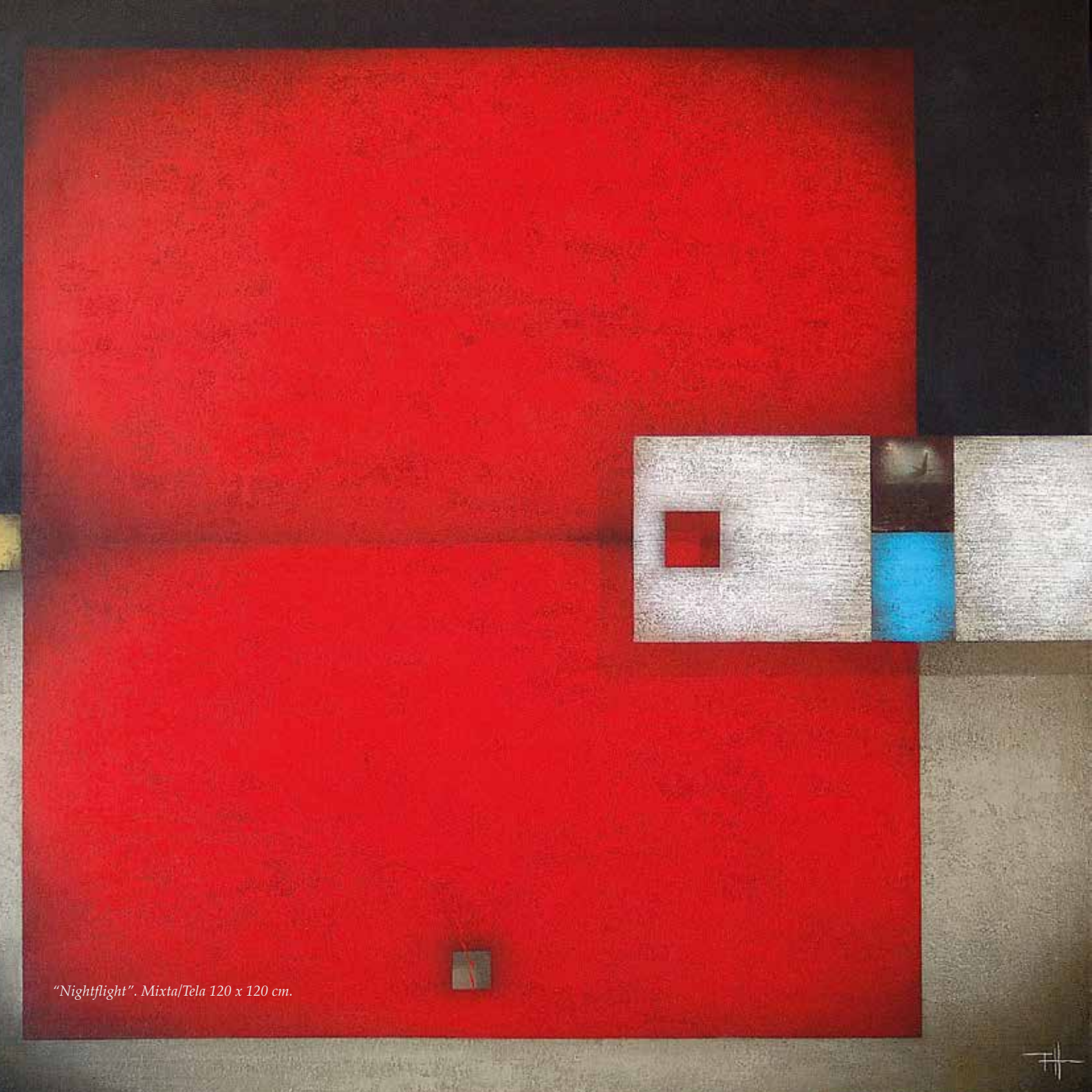


*S/T. Mixta/Madera 25 x 25 x 25 cm.*



*S/T. Mixta/Madera 25 x 25 x 25 cm.*

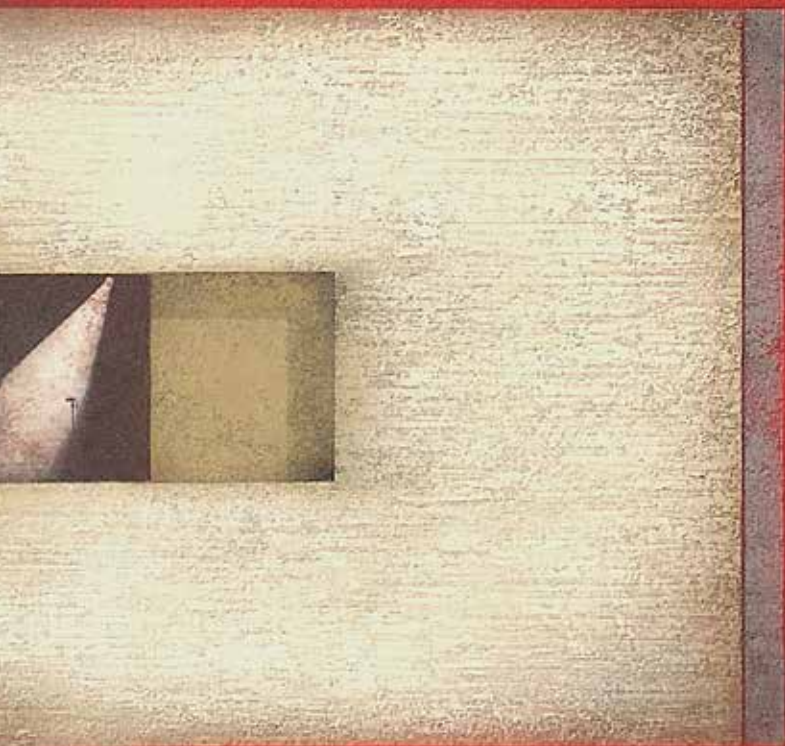




*"Nightflight". Mixta/Tela 120 x 120 cm.*



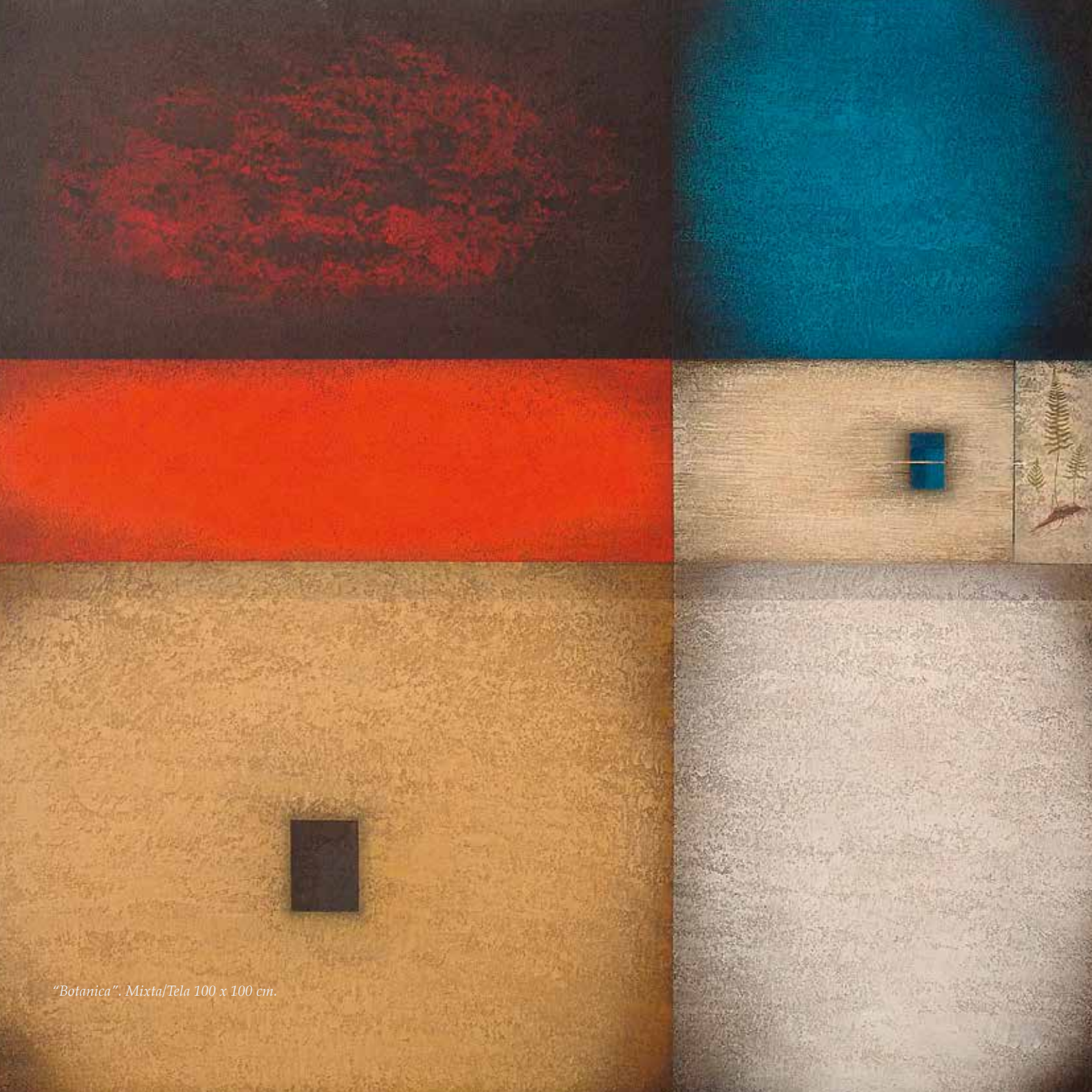




*"On stage". Mixta/Tela 80 x 80 cm.*

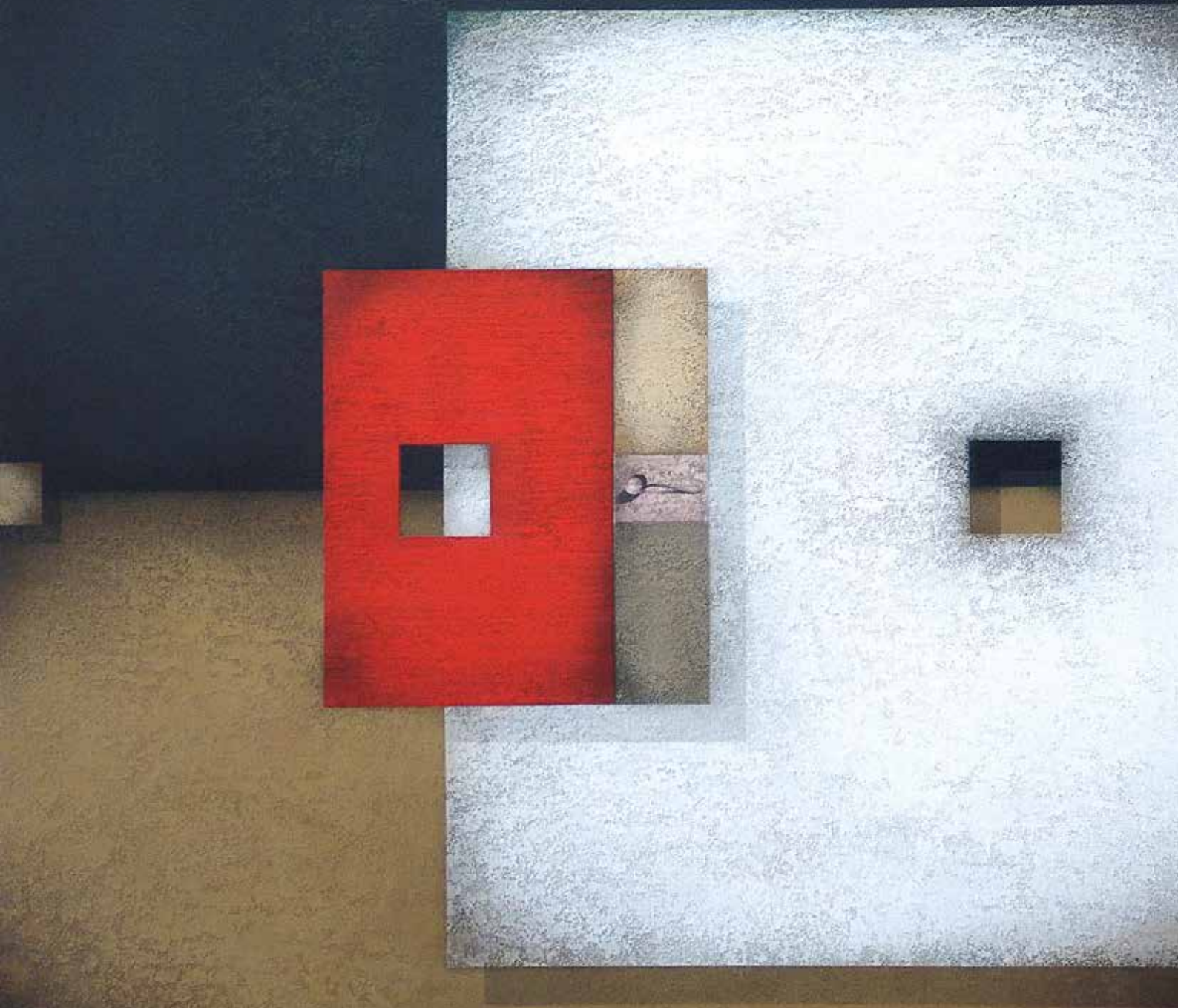






*"Botanica". Mixta/Tela 100 x 100 cm.*





*"Otros tiempos". Mixta/Tela 80 x 80 cm.*